

Go Learn Mobile App

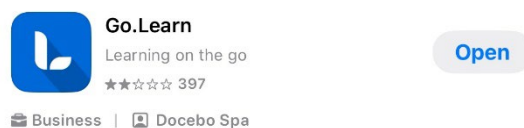
Learn from anywhere. Anytime.



Available features:

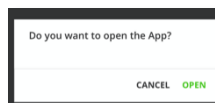
- Full access to the **e-Learning curriculum**
- Curated content through **My Channel resources**
- Downloadable **Course Study Guides**
- Ability to **upload and share** resources - including photos, videos, and external links
- **Connect and collaborate** with other EP Experts through dedicated channels

Accessing the Go. Learn App



1. When you open the www.charthealthcareacademy.net from your phone, you may be prompted to open the App:

- Clicking "OPEN" will take you to the App Store.



2. On a tablet or if you do not receive the prompt to open the app, you can search for the **Go Learn** App in your app store.

3. Install the Go Learn App.

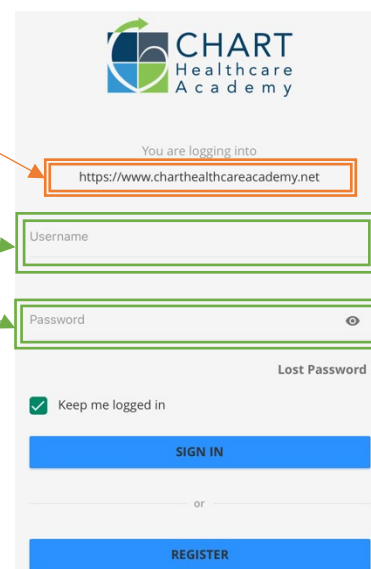


4. Open the Go Learn App and type in the URL:

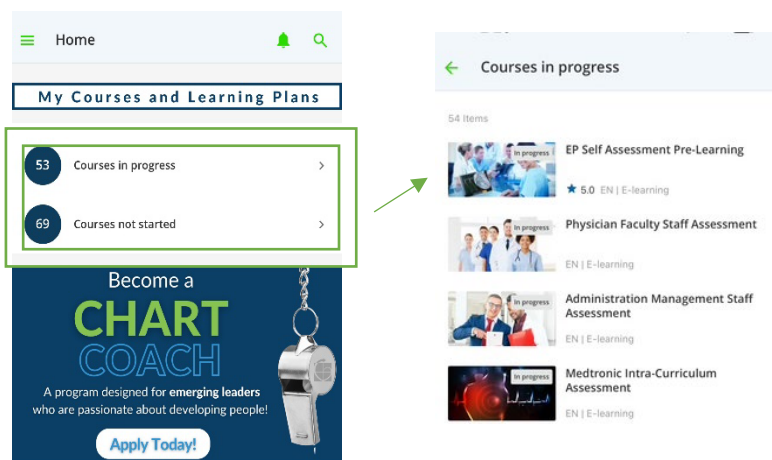
<https://www.charthealthcareacademy.net>

5. Input your Username and Password:

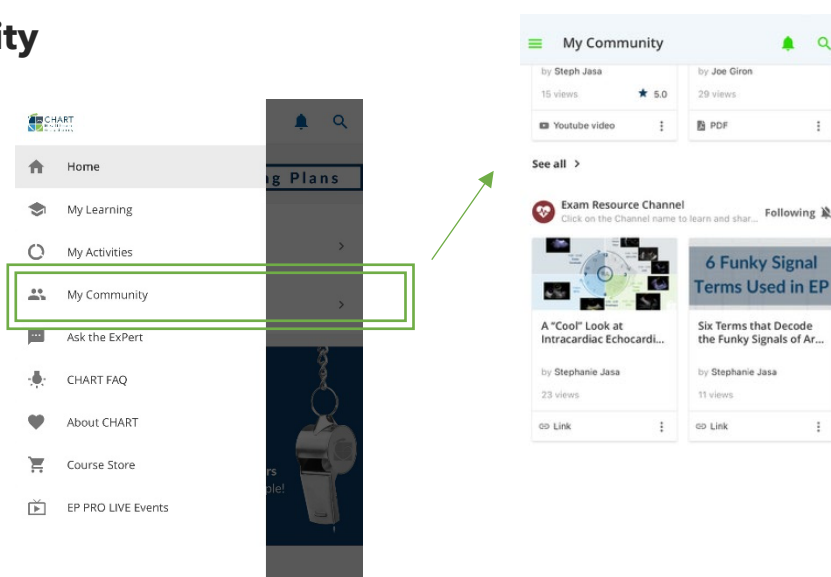
TIP: Your credentials are the same as your desktop log in.



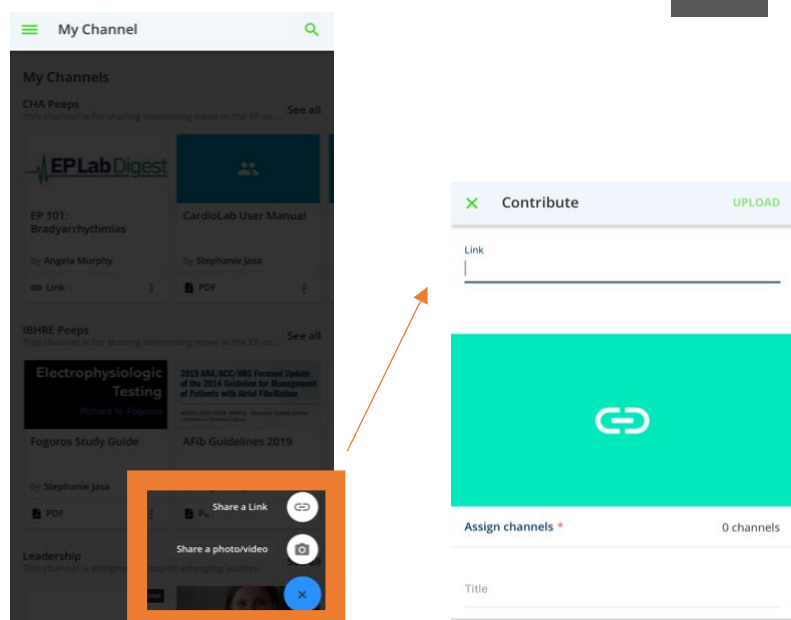
6. Access your Courses and Learning Plans



7. Access My Community



8. Upload Resources



For additional Go Learn App resources and more check out:

- MAP™ Quick Tips Channel
- CHART FAQ